



File was found and ready to download!

UPDATED 14 HOUES AGO

Fastest Source: [usenet.nl](https://www.usenet.nl)

Click the **download button** and select one of the found **cloud sources**.

6.4



2865 VIEWS

Download 

 SECURE SCANNED

You need to [log in](#) before you can post comments.



Navigation

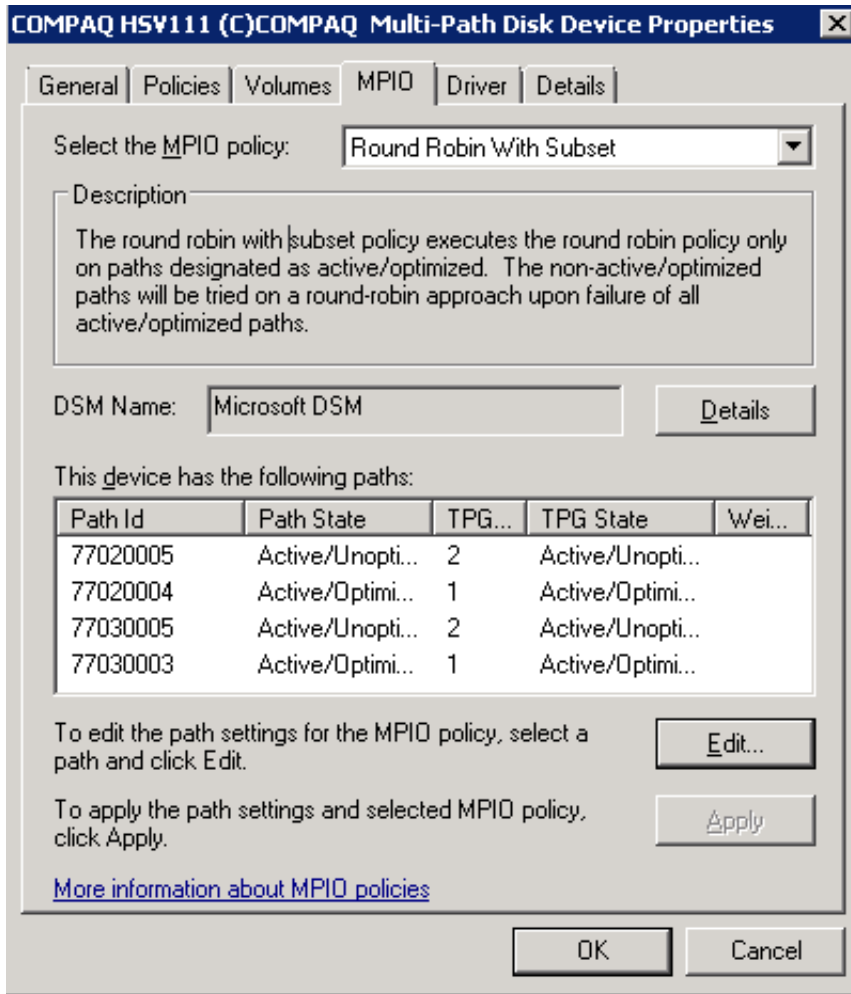


Registration



FAQ

[MPIO Setup Windows Server 2008R2](#)



[MPIO Setup Windows Server 2008R2](#)



File was found and ready to download!

UPDATED 14 HOUES AGO

Fastest Source: [useenet.nl](#)

Click the **download button** and select one of the found **cloud sources**.

6.4



2865 VIEWS

Download 

 SECURE SCANNED

You need to [log in](#) before you can post comments.



Navigation



Registration



FAQ

... to make sure that the two NICs on our 2012 R2 and 2008 R2 guests have MPIO configured properly. ... Easy Way to Verify that MPIO on a 2012 R2 and 2008 R2 Guest is Setup Properly? ... windows server 2012 r2iscsi.

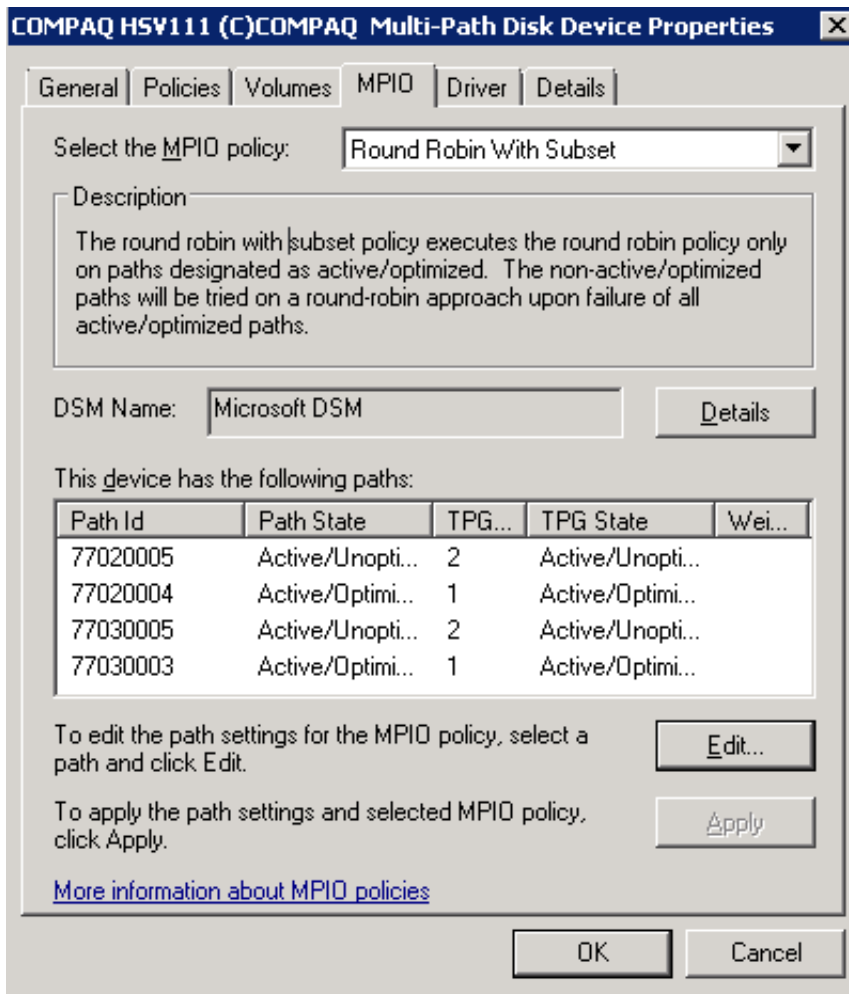
1. [configure mpio windows server 2016](#)
2. [configure mpio windows server 2019](#)
3. [install mpio windows server 2019](#)

Resolving The Problem. To set up multipath I/O on Windows Server 2008, you should do the following: Step 1: Start the Microsoft iSCSI Initiator ...

configure mpio windows server 2016

configure mpio windows server 2016, install mpio windows server 2016, configure mpio windows server 2019, install mpio windows server 2016 powershell, install mpio windows server 2019, configure mpio windows server 2016 core, configure mpio windows server 2008 r2, configure mpio windows server 2016 netapp [Forecast Bar 4.0.4](#)

Multipath-IO Devices. Using the Control Panel double-click on the MPIO applet to open up the MPIO Properties dialog box. Note: The MPIO applet can also be started from Start > Run mpiocpl. Click Add to add a new device entry. Click OK. MPIO for Fibre Channel (FC) on the Windows Server is completed.. When you configure your J4500 array for a multipath support, Windows will initially ... After installing the built-in MPIO driver for Windows Server 2008, multipath Далее мы последовательно пройдем через весь процесс установки и настройки Microsoft Multipath I/O (MPIO) в Windows Server 2008 R2. [Tiger Goes Gold](#)



[VueScan 9.6.10 Crack](#)

configure mpio windows server 2019

[Roland Cloud – Anthology 1993 v.1.1 \(CONCERTO\)](#)

To enable MPIO in a Server Core edition of Windows Server 2008 R2 or 2012, run the following command at an elevated command prompt... Setting Up MPIO for a Windows Cluster Using a Storage System gives an end-to-end example of setting up a two-node Windows Server 2008 R2 Exchange cluster Configuring MPIO for HA and Load Balancing. UpArrow.png. Install MPIO on Windows Server 2008 R2. To install the feature, please follow the This post will explain how to configure the Windows Server iSCSI Initiator to use Multi-path I/O (MPIO) for fault tolerant storage networking. [ISO Workshop 8.6 + Portable Free Download \[Latest\]](#)

install mpio windows server 2019

[Paris Isn't the Only Clean Energy Pact the U.S. Is Fleeing](#)

For details, see HyperMetro Configuration Guide for Huawei SAN Storage Using OS Native Multipathing Software. ... If MPIO is installed on Windows Server 2008 or later versions, you can use ... Windows Server 2008 R2.. Added support for Multipath I/O (MPIO). exe windows This download contains the ... Host Integration Tool (HIT) Kit on Windows Server 2008 R2 Core (no GUI).. Windows Server 2008* and 2008 R2* include integrated Multipath I/O (MPIO) support through integrated Multipath I/O (MPIO) support for Storage Area Networks Configuring for Windows 2000/2003/2008. ... Windows 2008 R2 iSCSI Initiator manual procedure Using Microsoft Native MPIO with Windows Server 2008.. Windows Server 2008 and Windows

Server 2008 R2 natively include Microsoft Multipath I/O. (MPIO), which is supported by all Dell EMC storage arrays. Note the If the Windows host will use a multi-path configuration to connect to the LUNs, you should install the MPIO feature. To install MPIO on Windows Server 2008:.. Hotfixes for Windows Server 2008 R2* (No Service Pack) Article ID: 979743- You cannot use an MPIO storage device after a failover operation Configuring iSCSI MPIO on Windows Server 2008 R2, involves 2 distinct procedures. The first procedure is to enable the MPIO feature. 3d2ef5c2b0 [Bridge Constructor PS4 – RESPAWN](#)

3d2ef5c2b0

[Nyjer Morgan: Dip of the month](#)